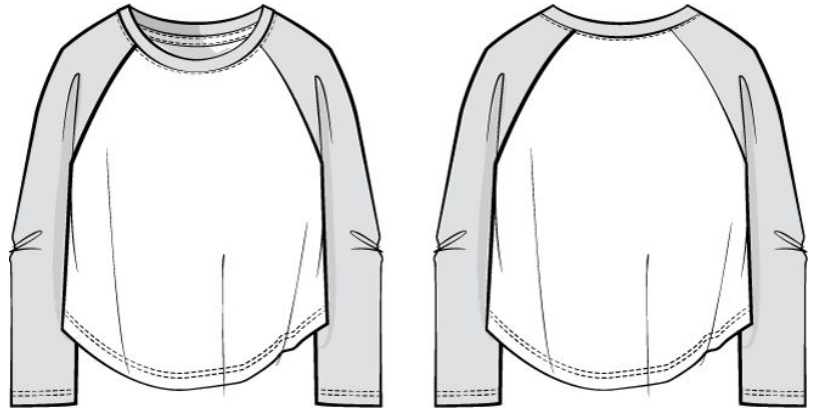


Image



Tech Pack	D41815 LS BASEBALL GR T 000756719 Adopted
Season	Fall 2024
Brand/Division	GAP - BABY
Department	TODDLER GIRL KNIT/SWEATERS
Collection	TODDLER GIRLS KNIT TOPS




Design BOM	LS BASEBALL GR T 000756719 525502,546144
BOM Number	000756719
Category	KNITS
Sub-Category	KNIT TOPS
Legacy Style Numbers	525502, 546144
Status	Adopted

Flow	September
Vendor	SHINWON CORPORATION
Created	2/22/2024, 5:13 AM
Modified	2/22/2024, 5:14 AM

Disclaimer Text

This Gap Inc. style must be produced and tested in compliance with all Product Safety Standards and Procedures as outlined in the Product Safety & Regulations Manual (Apparel & Apparel Accessories), PSR Protocols, SOPs, and current Technical Bulletins. This information can be found on the Gap Source Library on The Thread (Category Standards & Testing). Each vendor is responsible for ensuring that all products made for Gap Inc. are in compliance with all applicable laws, rules, guidelines, and regulations.

Components

Component	Type	Status	Created	Modified	BOMColorMatrix				
					Image	CC Name	CC Status	BOM CC Number	Final Sustainable Product Claims
LS BASEBALL GR T 000756719 525502, 546144	Design BOM	Adopted	2/22/2024, 5:14 A	2/22/2024, 5:14		IVORY FROST/BALSAM TREE - OLX	Adopted	000002956402	
						IVORY FROST/BEET RED (LOVED - FLOCK) - OLX	Adopted	000002956401	
						FR - IVORY FROST/BEET RED (LOVED - PUFF PRINT) - OLX	Concept	000002962075	

Displaying 1 - 1 of 1 results

Documents

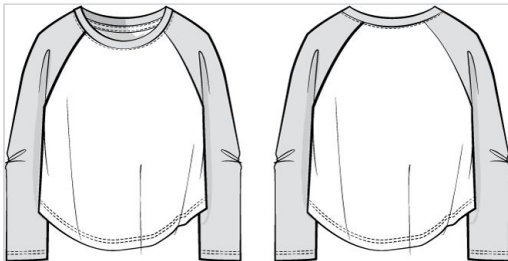
Document	File	Created	Modified	Delete Document	Owner	Owner Type
25648 CC#2(TRUE BLACK).jpg	25648 CC#2(TRUE BLACK).jpg	11/17/2022, 6:55 AM	5/23/2023, 6:24 AM	✓	GRAPHIC	Material
25648 CC#3(15-1114 tcx).jpg	25648 CC#3(15-1114 tcx).jpg	11/17/2022, 6:55 AM	5/23/2023, 6:25 AM	✓	GRAPHIC	Material
25648 CC#4(19-3815 tcx).jpg	25648 CC#4(19-3815 tcx).jpg	11/17/2022, 6:58 AM	5/23/2023, 6:25 AM	✓	GRAPHIC	Material
25648 CC#5(19-0413 tcx).jpg	25648 CC#5(19-0413 tcx).jpg	11/17/2022, 7:00 AM	5/23/2023, 6:25 AM	✓	GRAPHIC	Material
25648 CC#1 (19-1528 tcx).jpg	25648 CC#1 (19-1528 tcx).jpg	11/17/2022, 7:00 AM	5/23/2023, 6:25 AM	✓	GRAPHIC	Material
602209.ai	602209.ai	9/6/2022, 3:48 AM	9/6/2022, 3:55 AM	✓	GRAPHIC	Material
762386 & 762393 updated color combo.pdf	762386 & 762393 updated color combo.pdf	4/13/2023, 8:51 AM	5/23/2023, 6:22 AM	✓	GRAPHIC	Material
785333 785461.png	785333 785461.png	4/4/2023, 8:41 AM	5/23/2023, 6:23 AM	✓	GRAPHIC	Material
785333 785461.png	785333 785461.png	4/4/2023, 9:01 AM	5/23/2023, 6:20 AM	✓	GRAPHIC	Material
785638 785619.jpg	785638 785619.jpg	4/19/2023, 7:54 AM	5/23/2023, 6:23 AM	✓	GRAPHIC	Material
785638 785619.png	785638 785619.png	4/19/2023, 8:00 AM	5/23/2023, 6:23 AM	✓	GRAPHIC	Material

Displaying 1 - 11 of 16 results

Documents

Document	File	Created	Modified	Delete Document	Owner	Owner Type
794439 b10.png	794439 b10.png	4/26/2023, 3:49 AM	5/23/2023, 6:24 AM	✓	GRAPHIC	Material
804715 & 804520 NEW ADD ARCH LOGO HD & JOGGER.ai	804715 & 804520 NEW ADD ARCH LOGO HD & JOGGER.ai	4/13/2023, 6:38 AM	5/23/2023, 6:24 AM	✓	GRAPHIC	Material
RD269657 - 20's SLUB Jersey Slub Piece Dye.zfab	RD269657 - 20's SLUB Jersey Slub Piece Dye.zfab	12/16/2022, 5:27 AM	12/16/2022, 5:27 AM		269657	Material
Screenshot 2023-04-19 153638.jpg	Screenshot 2023-04-19 153638.jpg	4/19/2023, 7:37 AM	5/23/2023, 6:23 AM	✓	GRAPHIC	Material
Screenshot 2023-04-19 153728.jpg	Screenshot 2023-04-19 153728.jpg	4/19/2023, 7:38 AM	5/23/2023, 6:23 AM	✓	GRAPHIC	Material

Displaying 12 - 16 of 16 results



Design Number	D41815
Description	LS BASEBALL GR T
BOM Number	000756719
Design BOM	LS BASEBALL GR T 000756719 525502,546144
Status	Adopted
BOM Version	
BOM Primary RD Number	269657
Supplier [Allocate]	
Material Supplier Status	
Primary RD Comment	
Carryover	
Season	Fall 2024
Brand/Division	GAP - BABY
Department	TODDLER GIRL KNIT/ SWEATERS
Collection	TODDLER GIRLS KNIT TOPS
Design Concept	

Flow	September
Category	KNITS
Sub-Category	KNIT TOPS
Item Type	GRAPHIC TEE
Design Type	Top
Design Sub-Type	Tee
Fit Camp	
Element	
Vendor	SHINWON CORPORATION
GIS Office	Vietnam
Legacy Style Numbers	525502, 546144
Booking Track	
Good/Better/Best	
Priority	
Hard Tag Indicator	
Hang/Fold Instructions	
BOM Comments New	
Revision Modified	2/22/2024, 5:14 AM

Costing Information

Last Send to Costing Date	1/30/2024, 1:51 PM
Last Send to Costing Status	Quote HQ1641617 is successfully posted to TradeStone.












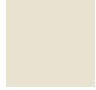
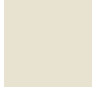
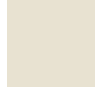
Send to Costing Status	pass
Send to Costing Validation	
Send to Costing	

BOM Details







Product	Material Name	Supplier Article Number	Gauge/Ends	Stitch	Common Size	Common Qty	Usage	Image	Primary RD	Quality Details	Supplier [Allocate]	UOM	Only for Product Colors	IVORY FROST/BALSAM TREE - OLX - 000002956402	IVORY FROST/BEET RED ((LOVED - FLOCK) - OLX - 000002956401	FR - IVORY FROST/BEET RED (LOVED - PUFF PRINT) - OLX - 000002962075	Comment
Fabric (2)																	

Displaying 5 groups and 9 results

BOM Details

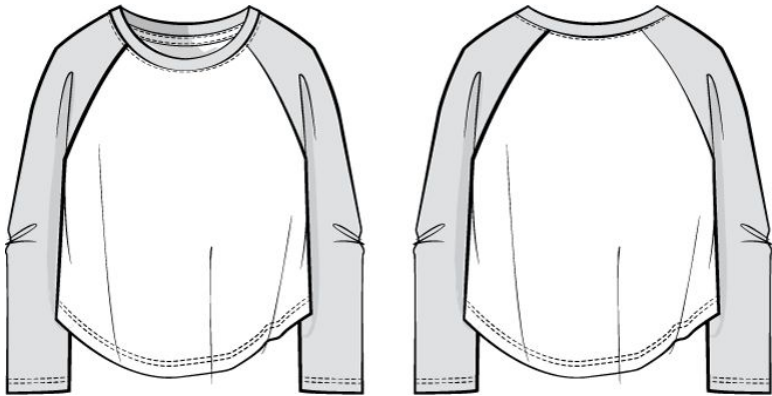
Product	Material Name	Supplier Article Number	Gauge/Ends	Stitch	Common Size	Common Qty	Usage	Image	Primary RD	Quality Details	Supplier [Allocate]	UOM	Only for Product Colors	IVORY FROST/BALSAM TREE - OLX - 000002956402	IVORY FROST/BEET RED ((LOVED - FLOCK) - OLX - 000002956401	FR - IVORY FROST/BEET RED (LOVED - PUFF PRINT) - OLX - 000002962075	Comment
269657	20's SLUB Jersey Slub Piece Dye					0	BODY		✓					Ivory Frost 245 	Ivory Frost 245 	Ivory Frost 245 	
269657	20's SLUB Jersey Slub Piece Dye					0	NECK TRIM, SLEEVE, BNT							Balsam Tree 372 	BEET RED 19-2030 TCX 058147 	BEET RED 19-2030 TCX 058147 	
Trim (2)																	
183757	Spun Polyester_Gap	Preferred - A&E or Coats; Tier 2 - Youm Kwang (Shell RD: 183427)				27	SLEEVE, NECK, AND BNT THREAD				183757:Platform			Balsam Tree 372 	BEET RED 19-2030 TCX 058147 	BEET RED 19-2030 TCX 058147 	
183757	Spun Polyester_Gap	Preferred - A&E or Coats; Tier 2 - Youm Kwang (Shell RD: 183427)				27	SIDE SEAM, BOTTOM HEM				183757:Platform			Ivory Frost 245 	Ivory Frost 245 	Ivory Frost 245 	
Wash (1)																	
WASH	WASH					0								ECO SPRAY WASH	ECO SPRAY WASH	ECO SPRAY WASH	
Graphic (1)																	
Displaying 1 - 5 of 9 results																	

BOM Details

Product	Material Name	Supplier Article Number	Gauge/Ends	Stitch	Common Size	Common Qty	Usage	Image	Primary RD	Quality Details	Supplier [Allocate]	UOM	Only for Product Colors	IVORY FROST/BALSAM TREE - OLX - 000002956402	IVORY FROST/BEET RED ((LOVED - FLOCK) - OLX - 000002956401	FR - IVORY FROST/BEET RED (LOVED - PUFF PRINT) - OLX - 000002962075	Comment
GRAPHIC	GRAPHIC					0								F24Z332 SEPT BRANNAN 	F24Z331 SEPT LOVED RINGER 	F24Z331 SEPT LOVED RINGER 	FR CC OF IVORY FROST/BEET RED - USE PUFF PRINT VERSION OF GRAPHIC, DO NOT USE FLOCK. NON-FR VERSION - USE FLOCK
Packaging and Labels (3)																	
228756	BABYGAP AND TODDLER HEAT TRANSFER LABELS - VERTICAL HTL - BGLBL-228756-G(GLOBAL) BGLBL-228756-C(CANADA) BGLBL-228756-E(EUROPE) Other Label	APPROVED SUPPLIERS: AVERY DENNISON, RPAC, SML, SAMWON				0	1/2" BELOW CB NK SEAM			Other Label / /	228756:Nominated			GAP BLUE	GAP BLUE	GAP BLUE	
188658	Gap_Universal_Normal Wash_C&C Label (Global) - 30mm Slit edge single face satin tape Care/Content Label	AVERY DENNISON, SML, RPAC				0	2" ABOVE BOTTOM HEM @ WEARERS LEFT SIDE			Care/Content Label / /	188658:Nominated						
146541	Printed GGO Global Traceability Label Traceability Label/Joker Tag	VENDOR SOURCED				0				Traceability Label/Joker Tag / Polyester / Straight Cut & Fused	146541:Nominated						

Displaying 6 - 9 of 9 results

Image



Season	Fall 2024
Brand/Division	GAP - BABY
Department	TODDLER GIRL KNIT/ SWEATERS
Collection	TODDLER GIRLS KNIT TOPS
Measurement Chart	D41815 MC F24 GS TG 2T Raglan Tee - CC 1st Revised
Milestone	1st Revised
Size Range	NUMERIC

Selected Sizes	2T, 3T, 4T, 5T
Base Size	2T
Grade Rule	Gap Toddler Knit Sweater Top Numeric (Half) 2022
Size Chart Tier	KB Numeric L30
Status	Ready
Sample Request Sizes	2T
Tolerance Changed	✓

Tolerance Message	
MC Comments	use ref. pattern for raglan armhole shape
Created	11/6/2023, 5:57 PM
Created By	Cynthia Chung
Modified	1/18/2024, 2:08 AM
Modified By	Jenny Kim

Measurement Chart

POM Name	Description	POM Variation	QC	Tol Fraction (-)	Tol Fraction (+)	Tolerance Message	Grading Override Message	2T	3T	4T	5T
B25.4	Neck Width	Seam to Seam	✓	-1/4	1/4			6 1/4	1/4	0	0
B26.2	Front Neck Drop	Imaginary Line to Seam		-1/4	1/4			3	1/4	0	0
B29.6	Back Neck Drop	Imaginary Line to Seam		-1/8	1/8			1 3/8	0	0	0
Z18.3	Trim Height	Neck at Center Back		-1/8	1/8			1/2	0	0	0

Displaying 1 - 4 of 18 results

Units: Fractions of inches Grade Rule Display: Increment

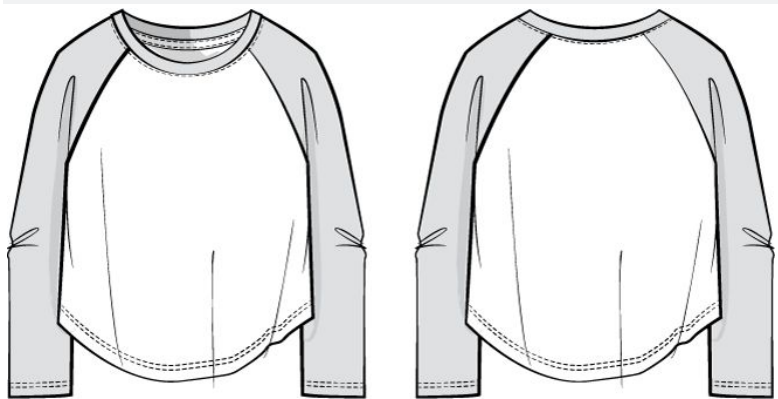
Measurement Chart

POM Name	Description	POM Variation	QC	Tol Fraction (-)	Tol Fraction (+)	Tolerance Message	Grading Override Message	2T	3T	4T	5T
F11	Chest at Armhole		✓	-3/8	3/8			11 1/4	3/8	3/8	1/2
I13	Bottom Opening Straight		✓	-3/8	3/8			12 1/4	3/8	3/8	1/2
T10.2	Hem Height	Bottom		-1/8	1/8			5/8	0	0	0
C3	Shoulder Slope			-1/8	1/8			1 1/4	0	0	1/8
D20	Raglan Position from High Point Shoulder at Front			-1/8	1/8			2	1/8	1/8	1/8
D21	Raglan Position form High Point Shoulder at Back			-1/8	1/8			1 1/2	1/8	1/8	1/8
E35.1	Raglan Sleeve Length from Imaginary Line-2 Point	Long	✓	-3/8	3/8			17 1/4	1	1	1 1/2
D19	Raglan Armhole Straight from Imaginary Line		✓	-1/4	1/4			8	1/4	1/8	1/4
E9	Bicep 1" below Armhole			-1/4	1/4			4 1/4	1/4	1/8	1/4
E33	Sleeve Opening		✓	-1/8	1/8			3	1/8	0	1/8
T10.3	Hem Height	Sleeve		-1/8	1/8			5/8	0	0	0
i11	Shirt Tail Height			-1/8	1/8			2	0	0	0
J9.9	CF Body Length from the Imaginary Line at the HPS to the Bottom Edge	(G) Top	✓	-3/8	3/8			14 1/2	3/4	3/4	3/4
B34.1	PSR Minimum Neck Stretch	(G)	✓	0	1/8			21	0	0	1

Displaying 5 - 18 of 18 results

Units: Fractions of inches Grade Rule Display: Increment

Image



Season	Fall 2024
Brand/Division	GAP - BABY
Department	TODDLER GIRL KNIT/ SWEATERS
Collection	TODDLER GIRLS KNIT TOPS
Measurement Chart	D41815 MC F24 GS TG 6-12M Raglan Tee - CC 1st Revised
Milestone	1st Revised
Size Range	NUMERIC

Selected Sizes	0-3 months, 3-6 months, 6-12 months, 12-18 months, 18-24 months
Base Size	6-12 months
Grade Rule	Gap Baby Knit Sweater Top Numeric (Half) 2022
Size Chart Tier	KB Numeric L30
Status	Ready
Sample Request Sizes	6-12 months

Tolerance Changed	✓
Tolerance Message	Tolerances were updated on one or more POMs
MC Comments	use ref. pattern for raglan armhole shape
Created	11/6/2023, 6:06 PM
Created By	Cynthia Chung
Modified	1/18/2024, 2:07 AM
Modified By	Jenny Kim

Measurement Chart

POM Name	Description	POM Variation	QC	Tol Fraction (-)	Tol Fraction (+)	Tolerance Message	Grading Override Message	0-3 months	3-6 months	6-12 months	12-18 months	18-24 months
B25.4	Neck Width	Seam to Seam	✓	-1/4	1/4		Grading on this critical POM has been overridden.	0	-1/4	6	1/4	0
B26.2	Front Neck Drop	Imaginary Line to Seam		-1/4	1/4			0	-1/4	2 3/4	1/4	0
B29.6	Back Neck Drop	Imaginary Line to Seam		-1/8	1/8			0	0	1 1/4	0	0

Displaying 1 - 3 of 19 results

Units: Fractions of inches Grade Rule Display: Increment

Measurement Chart

POM Name	Description	POM Variation	QC	Tol Fraction (-)	Tol Fraction (+)	Tolerance Message	Grading Override Message	0-3 months	3-6 months	6-12 months	12-18 months	18-24 months
Z18.3	Trim Height	Neck at Center Back		-1/8	1/8			0	0	1/2	0	0
F11	Chest at Armhole		✓	-3/8	3/8		Grading on this critical POM has been overridden.	-1/2	-1/2	10 1/4	3/8	3/8
I13	Bottom Opening Straight		✓	-3/8	3/8		Grading on this critical POM has been overridden.	-1/2	-1/2	11 1/4	3/8	3/8
T10.2	Hem Height	Bottom		-1/8	1/8			0	0	5/8	0	0
C3	Shoulder Slope			-1/8	1/8			-1/8	0	1	0	1/8
D20	Raglan Position from High Point Shoulder at Front			-1/8	1/8			0	0	1 3/4	0	0
D21	Raglan Position form High Point Shoulder at Back			-1/8	1/8			0	0	1 1/4	0	0
E35.1	Raglan Sleeve Length from Imaginary Line-2 Point	Long	✓	-3/8	3/8		Grading on this critical POM has been overridden.	-1 1/2	-1 1/2	14 1/4	1	1
D19	Raglan Armhole Straight from Imaginary Line		✓	-1/4	1/4		Grading on this critical POM has been overridden.	-1/4	-1/4	7 1/4	1/4	1/4
D19	Raglan Armhole Straight from Imaginary Line		✓	-1/4	1/4		Grading on this critical POM has been overridden.	-1/4	-1/4	7 1/4	1/4	1/4
E9	Bicep 1" below Armhole			-1/4	1/4			-1/4	-1/4	3 1/2	1/4	1/4
E33.1	Sleeve Opening	Long	✓	0	0	POM Tolerance was changed	Grading on this critical POM has been overridden.	-1/8	-1/8	2 1/2	1/8	1/8
T10.3	Hem Height	Sleeve		-1/8	1/8			0	0	5/8	0	0
i11	Shirt Tail Height			-1/8	1/8			0	0	1 1/2	0	0
J9.9	CF Body Length from the Imaginary Line at the HPS to the Bottom Edge	(G) Top	✓	-3/8	3/8		Grading on this critical POM has been overridden.	-1	-1	12 1/4	3/4	3/4

Displaying 4 - 18 of 19 results

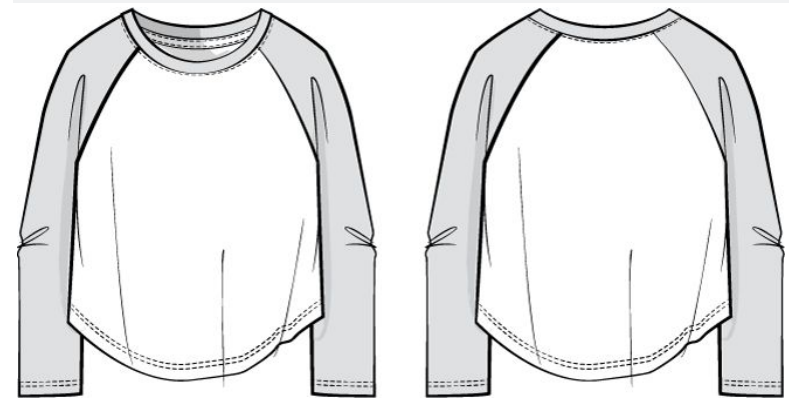
Units: Fractions of inches Grade Rule Display: Increment

Measurement Chart

POM Name	Description	POM Variation	QC	Tol Fraction (-)	Tol Fraction (+)	Tolerance Message	Grading Override Message	0-3 months	3-6 months	6-12 months	12-18 months	18-24 months
B34.1	PSR Minimum Neck Stretch	(G)	✓	0	1/8		Grading on this critical POM has been overridden.	-1	-1	20	1	0

Displaying 19 - 19 of 19 results Units: Fractions of inches Grade Rule Display: Increment

Image



Season	Fall 2024
Brand/Division	GAP - BABY
Department	TODDLER GIRL KNIT/ SWEATERS
Collection	TODDLER GIRLS KNIT TOPS
Measurement Chart	D41815 MC F24 GS TG 2T Raglan Tee - CC 1st Revised
Milestone	1st Revised
Size Range	NUMERIC

Selected Sizes	2T, 3T, 4T, 5T
Base Size	2T
Grade Rule	Gap Toddler Knit Sweater Top Numeric (Half) 2022
Size Chart Tier	KB Numeric L30
Status	Ready
Sample Request Sizes	2T
Tolerance Changed	✓

Tolerance Message	
MC Comments	use ref. pattern for raglan armhole shape
Created	11/6/2023, 5:57 PM
Created By	Cynthia Chung
Modified	1/18/2024, 2:08 AM
Modified By	Jenny Kim

Measurement Chart

POM Name	Description	POM Variation	Tol Fraction (-)	Tol Fraction (+)	2T	3T	4T	5T
B25.4	Neck Width	Seam to Seam	-1/4	1/4	6 1/4	6 1/2	6 1/2	6 1/2
B26.2	Front Neck Drop	Imaginary Line to Seam	-1/4	1/4	3	3 1/4	3 1/4	3 1/4
B29.6	Back Neck Drop	Imaginary Line to Seam	-1/8	1/8	1 3/8	1 3/8	1 3/8	1 3/8
Z18.3	Trim Height	Neck at Center Back	-1/8	1/8	1/2	1/2	1/2	1/2
F11	Chest at Armhole		-3/8	3/8	11 1/4	11 5/8	12	12 1/2
I13	Bottom Opening Straight		-3/8	3/8	12 1/4	12 5/8	13	13 1/2

Displaying 1 - 6 of 18 results

Units: Fractions of inches Grade Rule Display: Absolute

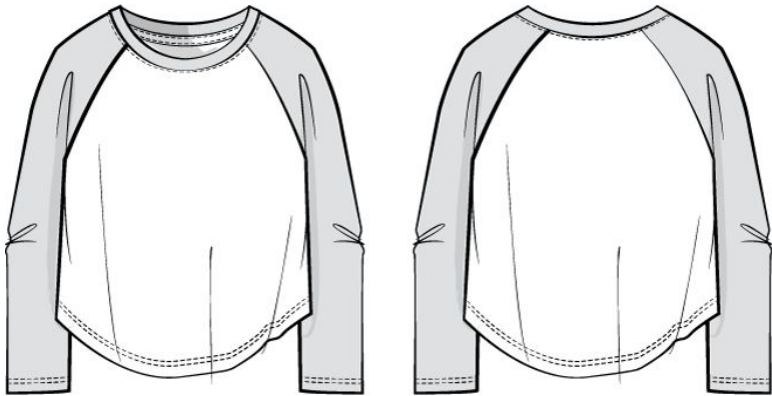
Measurement Chart

POM Name	Description	POM Variation	Tol Fraction (-)	Tol Fraction (+)	2T	3T	4T	5T
T10.2	Hem Height	Bottom	-1/8	1/8	5/8	5/8	5/8	5/8
C3	Shoulder Slope		-1/8	1/8	1 1/4	1 1/4	1 1/4	1 3/8
D20	Raglan Position from High Point Shoulder at Front		-1/8	1/8	2	2 1/8	2 1/4	2 3/8
D21	Raglan Position form High Point Shoulder at Back		-1/8	1/8	1 1/2	1 5/8	1 3/4	1 7/8
E35.1	Raglan Sleeve Length from Imaginary Line-2 Point	Long	-3/8	3/8	17 1/4	18 1/4	19 1/4	20 3/4
D19	Raglan Armhole Straight from Imaginary Line		-1/4	1/4	8	8 1/4	8 3/8	8 5/8
E9	Bicep 1" below Armhole		-1/4	1/4	4 1/4	4 1/2	4 5/8	4 7/8
E33	Sleeve Opening		-1/8	1/8	3	3 1/8	3 1/8	3 1/4
T10.3	Hem Height	Sleeve	-1/8	1/8	5/8	5/8	5/8	5/8
i11	Shirt Tail Height		-1/8	1/8	2	2	2	2
J9.9	CF Body Length from the Imaginary Line at the HPS to the Bottom Edge	(G) Top	-3/8	3/8	14 1/2	15 1/4	16	16 3/4
B34.1	PSR Minimum Neck Stretch	(G)	0	1/8	21	21	21	22

Displaying 7 - 18 of 18 results

Units: Fractions of inches Grade Rule Display: Absolute

Image



Season	Fall 2024
Brand/Division	GAP - BABY
Department	TODDLER GIRL KNIT/ SWEATERS
Collection	TODDLER GIRLS KNIT TOPS
Measurement Chart	D41815 MC F24 GS TG 6-12M Raglan Tee - CC 1st Revised
Milestone	1st Revised
Size Range	NUMERIC

Selected Sizes	0-3 months, 3-6 months, 6-12 months, 12-18 months, 18-24 months
Base Size	6-12 months
Grade Rule	Gap Baby Knit Sweater Top Numeric (Half) 2022
Size Chart Tier	KB Numeric L30
Status	Ready
Sample Request Sizes	6-12 months

Tolerance Changed	✓
Tolerance Message	Tolerances were updated on one or more POMs
MC Comments	use ref. pattern for raglan armhole shape
Created	11/6/2023, 6:06 PM
Created By	Cynthia Chung
Modified	1/18/2024, 2:07 AM
Modified By	Jenny Kim

Measurement Chart

POM Name	Description	POM Variation	Tol Fraction (-)	Tol Fraction (+)	0-3 months	3-6 months	6-12 months	12-18 months	18-24 months
B25.4	Neck Width	Seam to Seam	-1/4	1/4	5 3/4	5 3/4	6	6 1/4	6 1/4
B26.2	Front Neck Drop	Imaginary Line to Seam	-1/4	1/4	2 1/2	2 1/2	2 3/4	3	3
B29.6	Back Neck Drop	Imaginary Line to Seam	-1/8	1/8	1 1/4	1 1/4	1 1/4	1 1/4	1 1/4
Z18.3	Trim Height	Neck at Center Back	-1/8	1/8	1/2	1/2	1/2	1/2	1/2

Displaying 1 - 4 of 19 results

Units: Fractions of inches Grade Rule Display: Absolute

Measurement Chart

POM Name	Description	POM Variation	Tol Fraction (-)	Tol Fraction (+)	0-3 months	3-6 months	6-12 months	12-18 months	18-24 months
F11	Chest at Armhole		-3/8	3/8	9 1/4	9 3/4	10 1/4	10 5/8	11
I13	Bottom Opening Straight		-3/8	3/8	10 1/4	10 3/4	11 1/4	11 5/8	12
T10.2	Hem Height	Bottom	-1/8	1/8	5/8	5/8	5/8	5/8	5/8
C3	Shoulder Slope		-1/8	1/8	7/8	1	1	1	1 1/8
D20	Raglan Position from High Point Shoulder at Front		-1/8	1/8	1 3/4	1 3/4	1 3/4	1 3/4	1 3/4
D21	Raglan Position form High Point Shoulder at Back		-1/8	1/8	1 1/4	1 1/4	1 1/4	1 1/4	1 1/4
E35.1	Raglan Sleeve Length from Imaginary Line-2 Point	Long	-3/8	3/8	11 1/4	12 3/4	14 1/4	15 1/4	16 1/4
D19	Raglan Armhole Straight from Imaginary Line		-1/4	1/4	6 3/4	7	7 1/4	7 1/2	7 3/4
D19	Raglan Armhole Straight from Imaginary Line		-1/4	1/4	6 3/4	7	7 1/4	7 1/2	7 3/4
E9	Bicep 1" below Armhole		-1/4	1/4	3	3 1/4	3 1/2	3 3/4	4
E33.1	Sleeve Opening	Long	0	0	2 1/4	2 3/8	2 1/2	2 5/8	2 3/4
T10.3	Hem Height	Sleeve	-1/8	1/8	5/8	5/8	5/8	5/8	5/8
i11	Shirt Tail Height		-1/8	1/8	1 1/2	1 1/2	1 1/2	1 1/2	1 1/2
J9.9	CF Body Length from the Imaginary Line at the HPS to the Bottom Edge	(G) Top	-3/8	3/8	10 1/4	11 1/4	12 1/4	13	13 3/4
B34.1	PSR Minimum Neck Stretch	(G)	0	1/8	18	19	20	21	21

Displaying 5 - 19 of 19 results

Units: Fractions of inches Grade Rule Display: Absolute

Centric 8 Production (7.4) **D41815-LS BASEBALL GR T** **D41815** **IN WORK 2/22/2024, 5:14 AM**

Carry Over		Collection	TODDLER GIRLS KNIT TOPS	Spec Component	D41815
Brand/Division	GAP - BABY	Number of CCs	15		
Department	TODDLER GIRL KNIT/ SWEATERS	Type	Safety Callouts		

Items

Spec Item	Safety Callouts	PSR Age Group	PSR Product Group	PSR Market	Comment	PSR Line Review Date	BOM CC Exception	BOM CC Exception Comment
baby / global / graphics: baby / global / graphics (5) ↔								
USA/CA Baby Apparel - Appliques and Patches: Choking Hazard (118)	Appliques and Patches must be machine attached to ensure secure attachment. Recommend development testing on all trims to meet attachment strength requirements.	Baby	Apparel	USA/CA				
Baby - Flocking: Formaldehyde, Skin Irritation (522)	Flocking commonly has high formaldehyde issues. Recommend doing development testing on flocking to determine if there will be formaldehyde issues in production. Flocking must pass the durability to extended wash test - 30 washes in development and 20 washes in production.	Baby	Sleep	USA/CA				
Global Baby APPAREL - Glitter Print: Eye Irritation, Laceration and Ingestion Hazards (207)	Loose glitter is not allowed for baby. Glitter must be fully contained in a screen print so that no glitter crystals can detach from the garment.	Baby	APPAREL	Global				
Global Baby APPAREL - Foil Prints: Choking Hazard (199)	Foil print must pass the durability to extended wash test - 30 washes in development and 20 washes in production.	Baby	APPAREL	Global				
Global Baby APPAREL - Puff Print: Choking Hazard (266)	Puff prints must pass the durability to extended wash test - 30 washes in development and 20 washes in production.	Baby	APPAREL	Global				
Baby / No Safety Callout: No safety callout / Baby (1) ↔								
Global Baby APPAREL - No Safety Callout (233)	Sample or sketch was reviewed, did not have any construction, material, finish nor design details that present physical nor mechanical hazards.	Baby	APPAREL	Global				

Displaying 2 groups and 6 results