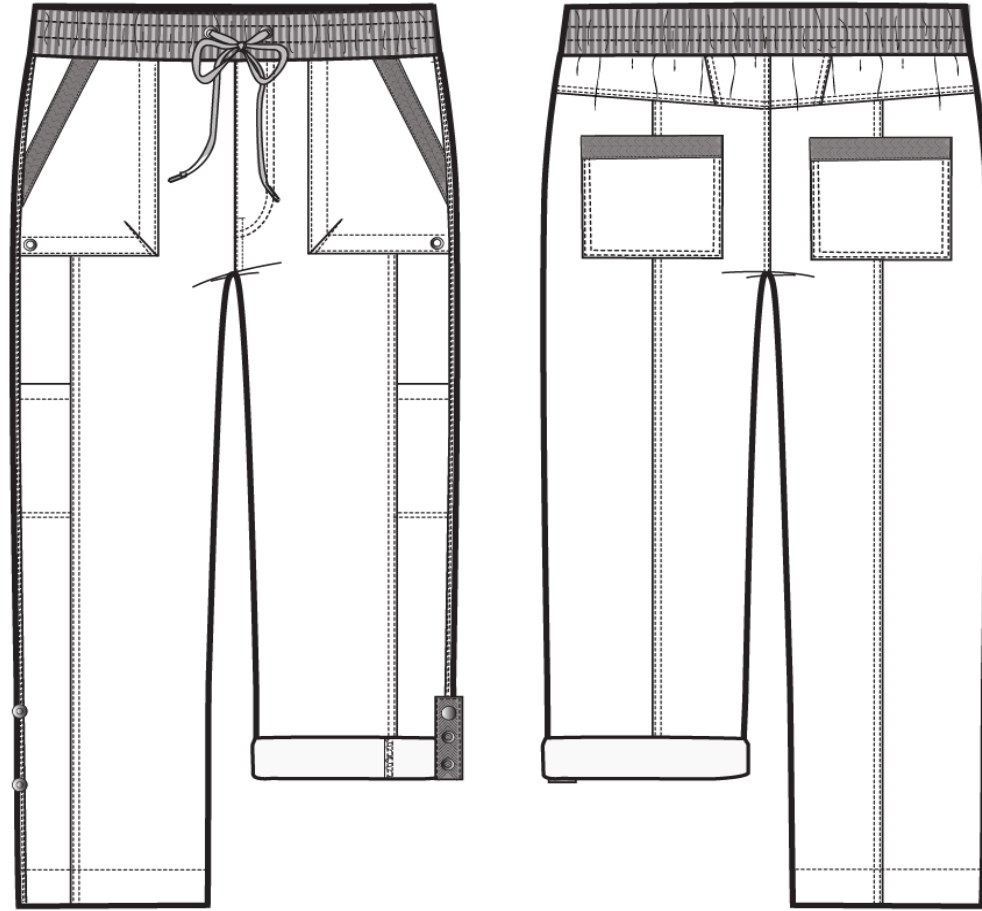
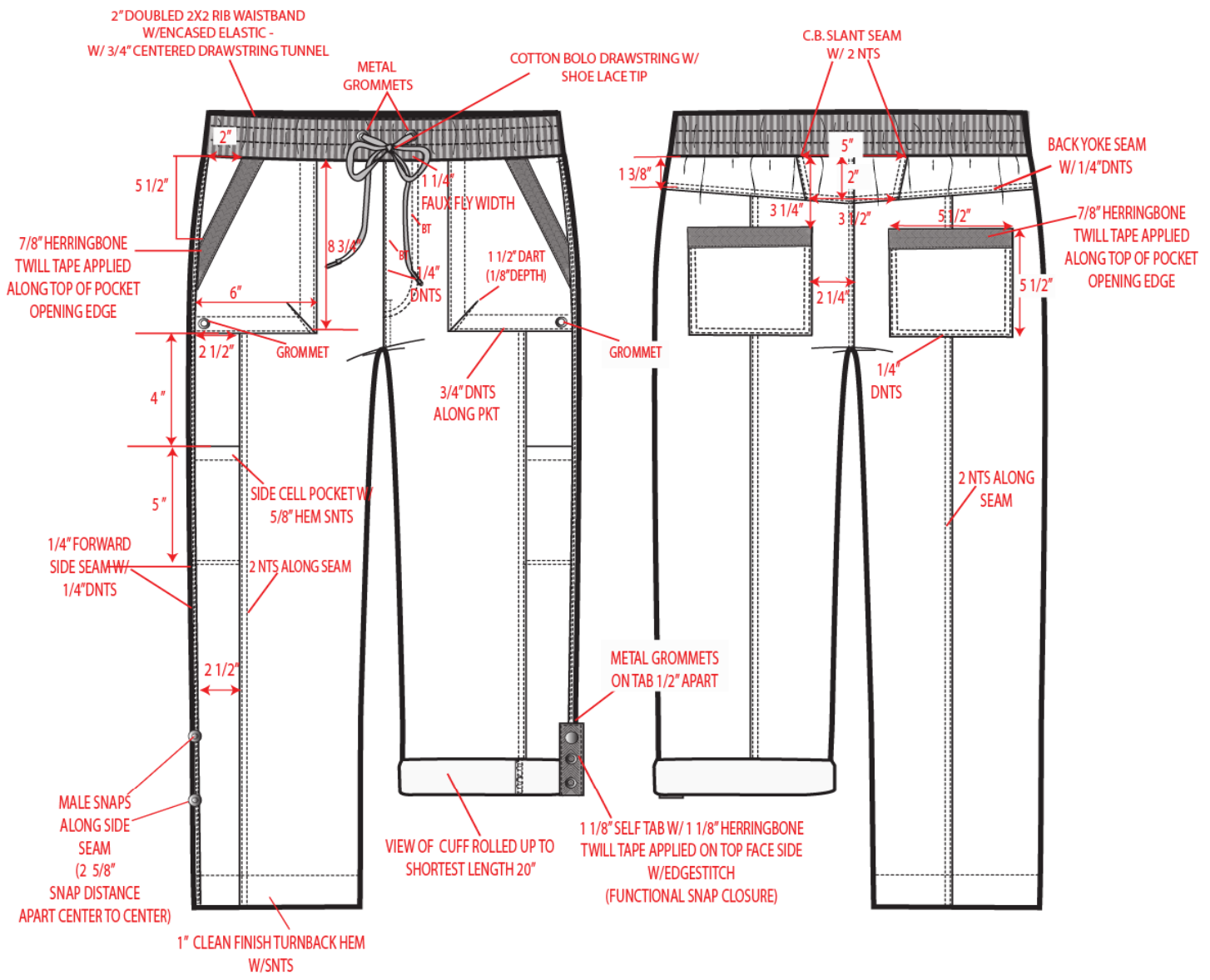


75076R5

24" INSEAM (ROLLED 2X/ TO 21" & 3X TO 20")



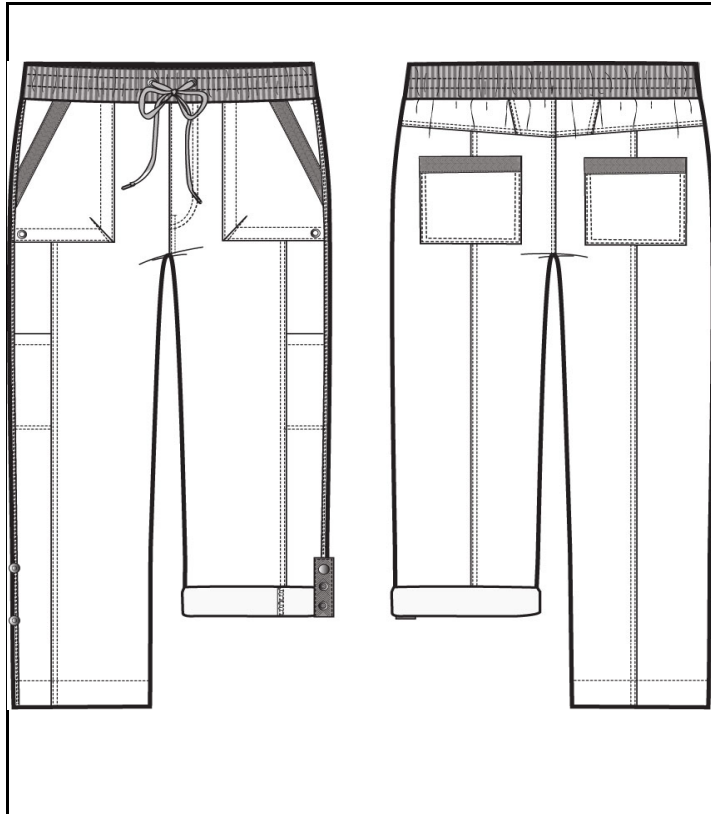
This design is intended only for the use of the individual or entity to which it is addressed and is the intellectual property of IDG, Inc. It is confidential in nature and is protected by applicable privileges and constitutes non-public information. It is intended to be conveyed only to the designated recipients. Use, dissemination or reproduction of this design by unintended recipients is not authorized and may be unlawful.



STYLE 款号: **75076R5**

SEE PRODUCTION SPECS FOR UPDATES

DATE: 3.4.20
UNIT: INCH





POM	DESCRIPTION	8	
1	WAIST @ TOP EDGE (RELAX)	33 1/4	
2	WAIST @ TOP EDGE (EXTENDED)	41	
3	WAIST @ SEAM (RELAX)	34 1/2	
4	WAISTBAND WIDTH	2	
6	HIGH HIP (3 1/2" BELOW WB TOP EDGE RELAX- WOVEN)	39	
7	LOW HIP (7 1/2" BELOW WB TOP EDGE RELAX- WOVEN)	41 1/2	
8	THIGH (1" BELOW CROTCH)	25 1/2	
9	KNEE (11" BELOW CROTCH)		
10	FRT RISE (TO TOP OF W.B.)	9 7/8	
11	BK RISE (TO TOP OF W.B.)	16	
12	INSEAM (UNROLLED)	24	
12	INSEAM (ROLLED 2X)	21	
13	INSEAM (ROLLED 3X)	20	
14	LEG OPENING	16 1/2	
	HEM WIDTH	1	
15	WAIST GROMMET DISTANCE APART	2 1/8	
16	EXPOSED DRAWSTRING LENGTH @ EACH SIDE OUTSIDE GROMMET	13 1/2	
17			
18	FAUX FLY L X W	4 1/2 X 1 1/4	
19	SIDE HEM TAB (L X W)	7 1/4 X 1 1/8	
20	1ST SNAP POSITION FROM HEM EDGE TO CENTE OF SNAP	4 3/4	
21	2ND SNAP POSITION FROM HEM EDGE TO CENTE OF SNAP	7 1/4	
22			
23			
24			
25			
26			
27			
28			
29			
30			
31			
32			
33			
34			
35			



Direct Group 499 7th Ave. 12th Fl South Tower New York, Ny 10018 212-

SAMPLE REQUEST

Brand: Due in NY: COSTING Date: 3.8.2024


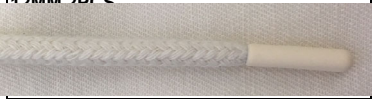
Style Number	Style Description	Fabric Ref #	Fabric Description	Fabric Color	Garment Wash & Pressing	Thread Color	Trim	Inside Waist	Label	Notes	Sample Size
75076R5	CONVERTIBLE CAPRI PANT (24" INSEAM ROLLED 2X TO 21" ROLLED 3X TO 20")	BODY: #2301 ----- WAISTBAND: 2X2 RIB: #S/8107	BODY: STRETCH POPLIN 98% COTTON 2% SPAN (160 GSM AW) ----- 2x2 rib kniti: 95% Cotton, 5% Spx 290GSM (AW) 32'S * 70	INK - PPD	GARMENT WASH W/ ENZYMES, SILICONE + SOFTENERS Lt Steam HI/LO RUMPLING EFFECT ON SEAMS	20'S/3 6-7 SPI DTM	**ALL METAL TRIMS COLOR IS ST02 DULL ANTI NICKEL 1.) HERRINGBONE TWILL TAPE: (1 1/8" FOR HEM TABS), (7/8" FOR FRONT & BK PKTS): COLOR: DTM  2.) ANTIQUE NICKLE METAL CAP TOP SNAPS: SIZE: 22L X 2 PCS 3.) COTTON BOLO DRAWSTRING W/PLASTIC SHOELACE TIP (FOR INSIDE WAISTBAND - FUNCTIONAL) SIZE : 6MM STRING WIDTH, 12MM TIP LENGTH/ COLOR: DTM TO BODY 4.) METAL GROMMETS: SIZE: 10MM(FRONT PKT)/8PCS 5) METAL GROMMETS: FOR CF SIZE: 1 	2 " FLAT ELASTIC (INSIDE W.B.) COLOR: BLACK			8



Direct Group 499 7th Ave. 12th Fl South Tower New York, Ny 10018 212-

SAMPLE REQUEST

Brand: Due in NY: COSTING Date: 3.8.2024

Style Number	Style Description	Fabric Ref #	Fabric Description	Fabric Color	Garment Wash & Pressing	Thread Color	Trim	Inside Waist	Label	Notes	Sample Size
75076R5	CONVERTIBLE CAPRI PANT (24" INSEAM ROLLED 2X TO 21" ROLLED 3X TO 20")	BODY: GSW-7978 ----- WAISTBAND: 2X2 RIB: #S/8107	BODY: STRETCH POPLIN 98% COTTON 2% SPAN (160 GSM AW) ----- 2x2 rib kniti: 95% Cotton, 5% Spx 290GSM (AW) 32'S * 70	DUSTY OLIVE PPD	GARMENT WASH W/ ENZYMES, SILICONE + SOFTENERS Lt Steam HI/LO RUMPLING EFFECT ON SEAMS	20'S/3 6-7 SPI DTM	**ALL METAL TRIMS COLOR IS ST02 DULL ANTI NICKEL 1.) HERRINGBONE TWILL TAPE: (1 1/8" FOR HEM TABS), (7/8" FOR FRONT & BK PKTS): COLOR: DTM  2.) ANTIQUE NICKLE METAL CAP TOP SNAPS: SIZE: 22L X 2 PCS 3.) COTTON BOLO DRAWSTRING W/PLASTIC SHOELACE TIP (FOR INSIDE WAISTBAND - FUNCTIONAL) SIZE : 6MM STRING WIDTH, 12MM TIP LENGTH/ COLOR: DTM TO BODY 4.) METAL GROMMETS: SIZE: 10MM(FRONT PKT)/8PCS 5) METAL GROMMETS: FOR CF SIZE: 12MM 2PCS 	2 " FLAT ELASTIC (INSIDE W.B.) COLOR: BLACK			8